

RAZDOLBOSCH

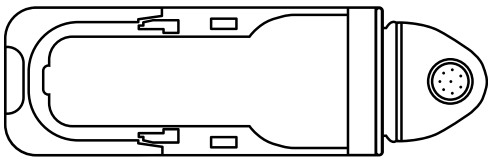
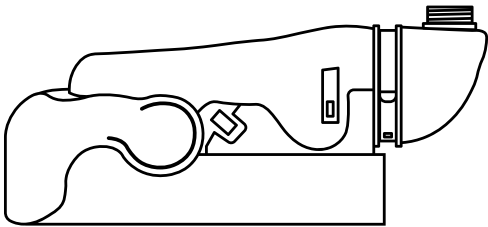
The **RAZDOLBOSCH** Tuning Adapter is designed for secure, low-level ECU memory access on 2023+ vehicles equipped **only** with **Bosch ECM 4.x** architecture.

Remote tuning for DPF, DEF/SCR, and EGR on 2023+ Volvo and Mack trucks, plus Volvo buses—stuff that used to be impossible through the OBD port—is now fully doable with this adapter.

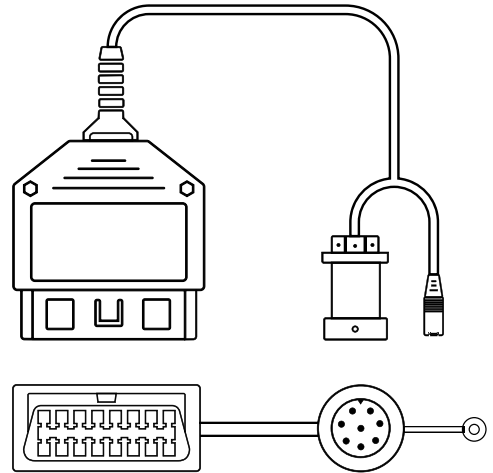
It can be used in both ways: on the bench or on the engine (truck/bus). Works with any RP1210 diagnostic tool.

What's in the box:

1. RAZDOLBOSCH basics:

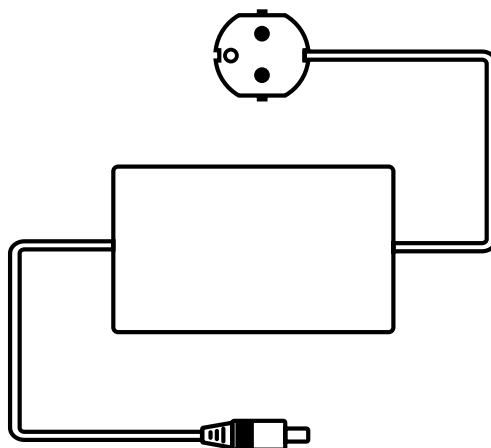


RAZDOLBOSCH (1 pc)



UNO Cable (1 pc)

2. Power supply:

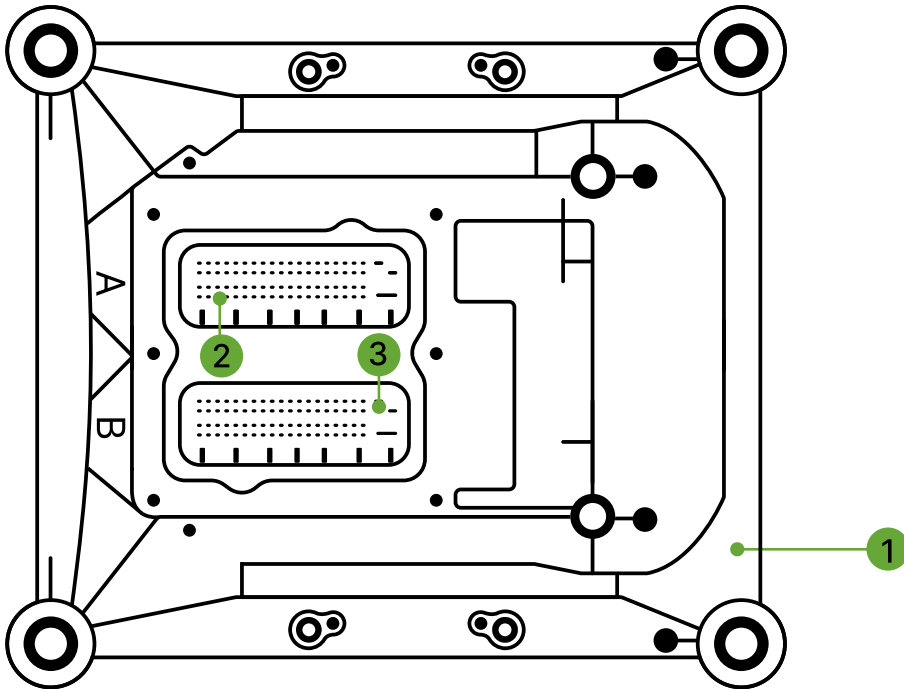


AC adapter(1 pc)

Connection and Tuning:

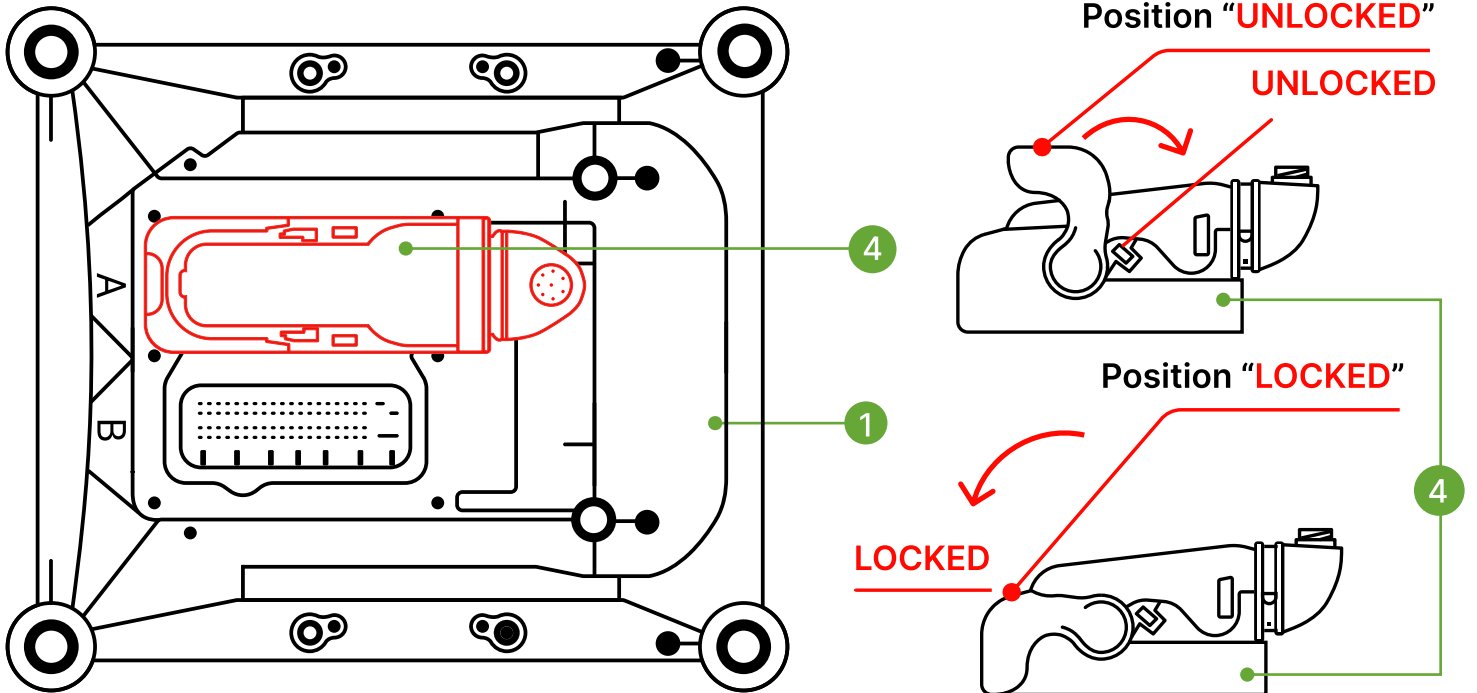
⚠ IMPORTANT: Unplug both connectors from the ECM before using the RAZDOLBOSCH! ⚠

1. The RAZDOLBOSCH connection and ECM preparation.



Prepare the ECM 1 for connection with the RAZDOLBOSCH 4.

- Release sockets (A,B) 2 and 3.

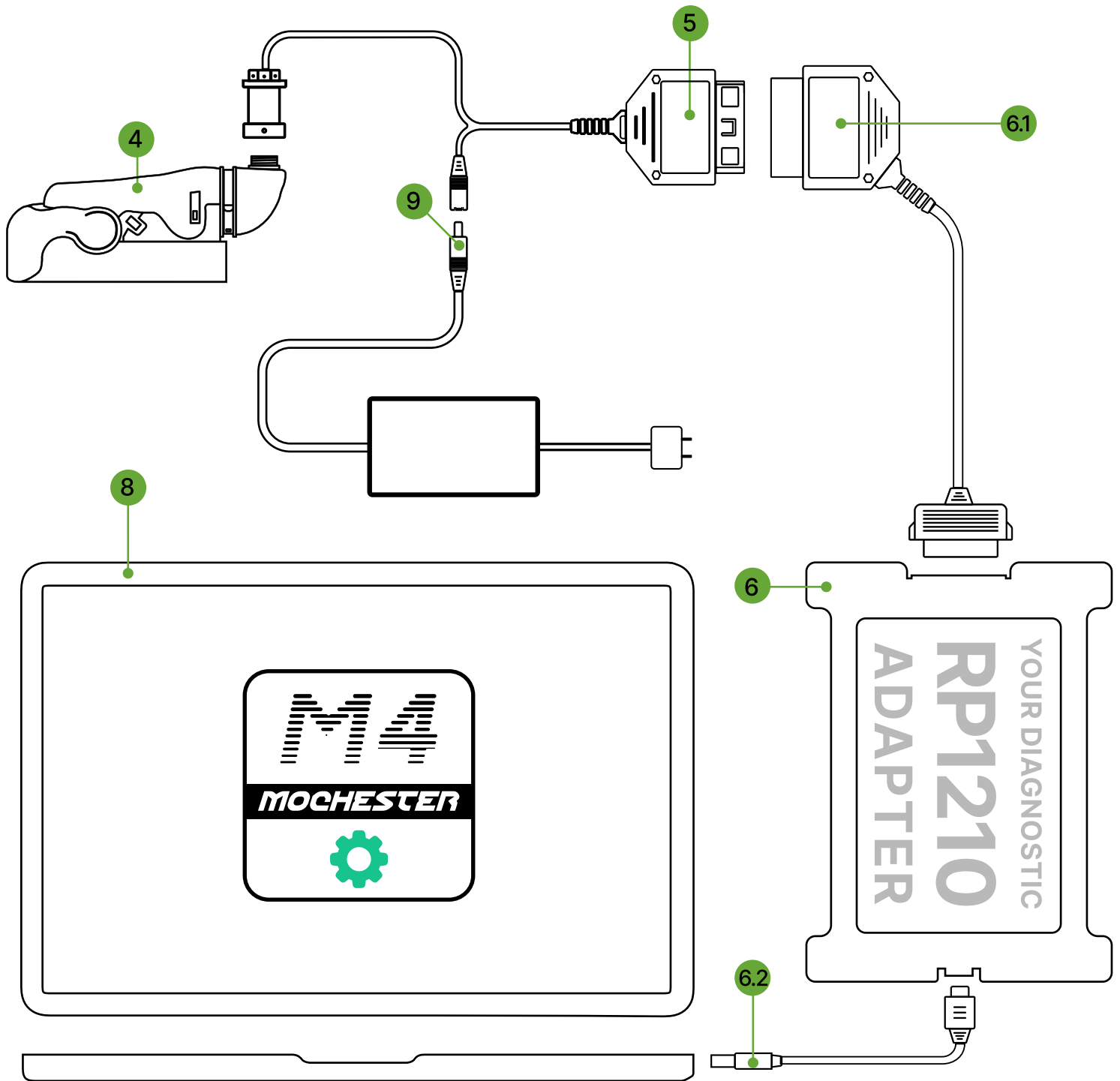


Connect the RAZDOLBOSCH 4 to the ECM 1.

- Move the lever to the position "UNLOCKED".
- Connect RAZDOLBOSCH to the "A" ECM socket 2.
- Move the lever to the position "LOCKED".

Connection and Tuning:

2. Diag laptop, RP1210 adapter, and power connection to the ECM.

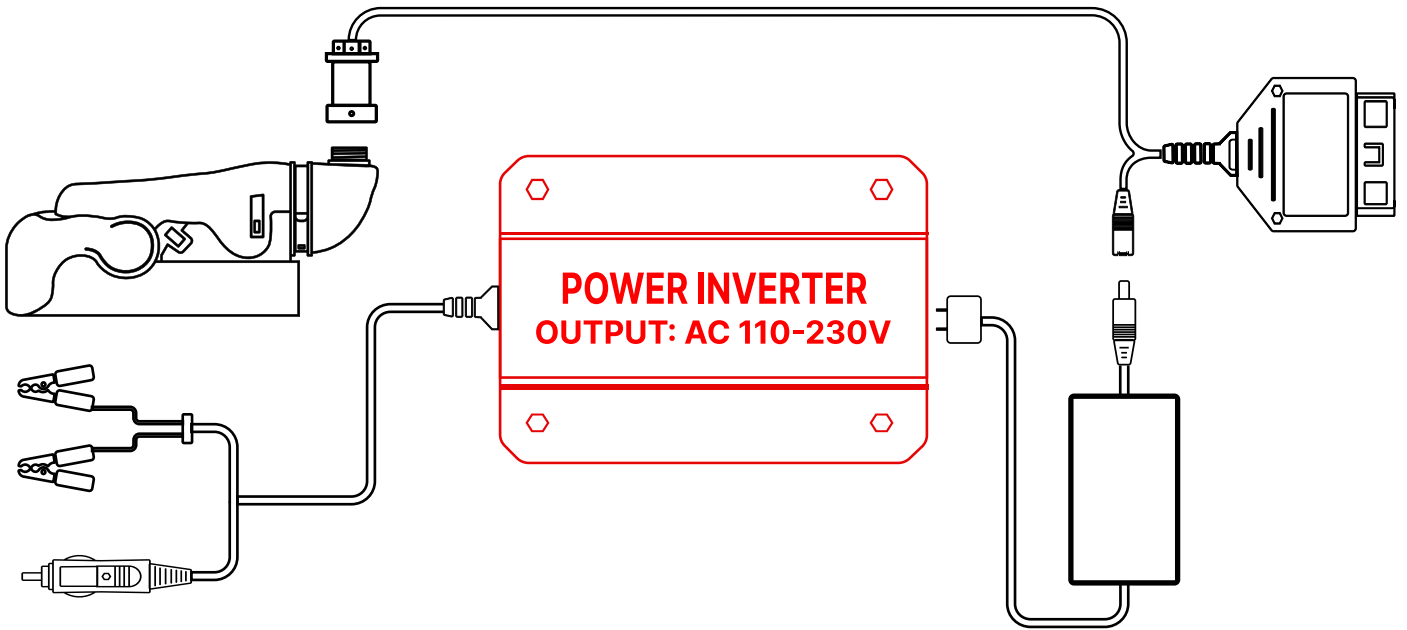


Perform all actions sequentially in the following order:

- Connect the UNO Cable (5) to the RAZDOLBOSCH (4) and to the RP1210 adapter cable (6.1).
- Connect the adapter cable (6.2) to the adapter (6) and the diagnostic laptop (8).
- Connect the AC Power Adapter (9) included with the RAZDOLBOSCH to the UNO Cable (5).
- Launch Mochester Application on your diag laptop and follow the instructions.

Wrong Ways to Connect the RAZDOLBOSCH:

1. Do not connect the RAZDOLBOSCH using the vehicle DC-to-AC adapter.



2. Do not connect the RAZDOLBOSCH using the same electricity network as the truck battery charging device is.

